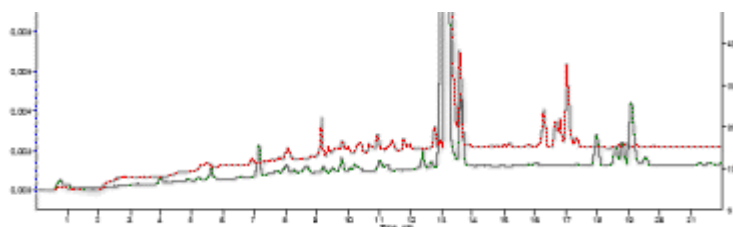


**ChromSword® AutoRobust –  
automated HPLC method  
robustness testing**

ChromSword® AutoRobust is able to test the robustness of HPLC methods **fully** automatically to study the influence of variations in method parameters on chromatographic results. The following parameters can be tested fully automatically:

- flow rate
- temperature
- concentration of an organic modifier
- gradient slope and break points positions
- injection volume
- equilibration time
- column batches
- buffer pH or concentration
- wavelength
- configuration of columns and solvents valves (if available) can be specified.
- The basic, initial method to be tested for robustness can be specified or automatically imported from ReportViewer.
- The absolute change in parameters to be tested, the number of steps to be performed for each parameter and a general plan (column batches, buffers, vial number) can be set up in seconds.
- Parameters to be tested can be selected optionally for each experiment.
- The ReportViewer supports robustness projects and reports the resolution for each pair, displays chromatograms, overlays them and reports the summary of robustness experiments.

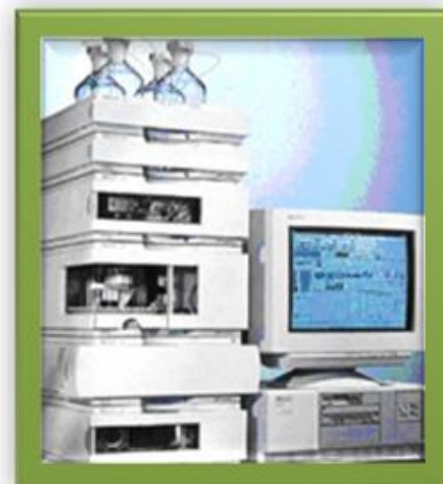
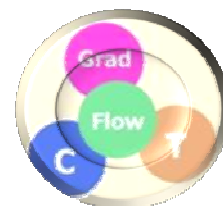


- It also generates automatically a report as Microsoft Word documents with all methods, data and chromatograms.
- Tables can be exported in Microsoft Excel and Microsoft Word.

**automated  
robustness  
testing with**

...

**ChromSword®  
AutoRobust  
1.1**





### hard and software support

#### Agilent 1100/1200/1200RR

*ChemStation® 16 bit versions A 09.01 and*

*A 09.03 or higher*

*ChemStation® 32 bit versions B.01 and higher*

*ChemStationPlus/Security pack compatible*

*EZChrom Elite® HPLC software*

#### Hitachi LaChromElite®

*HSM , EZChromElite software*

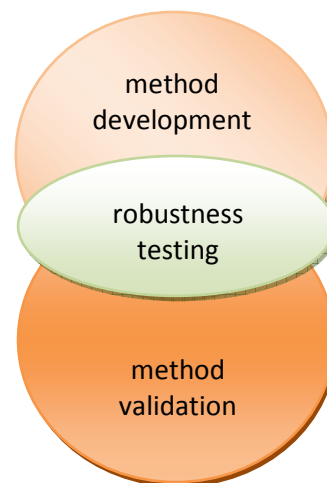
#### Waters Alliance

*Millennium 32, versions 3.2. and 4*

*Empower and Empower 2 Workstation*

#### Knauer SmartLine LC

*ChromGate software*



### further information from

### The ChromSword® Group

[www.chromsword.net](http://www.chromsword.net)

#### North America

**IRIS Technologies International, Ltd.**

**1615 Branch Valley Drive**

**Roswell, GA 30076, USA**

- **Tel: +1 404-348-4130**
- **Fax: +1 404-806-9525**
- **[www.chromsword.net](http://www.chromsword.net)**
- **E-Mail: [info@chromsword.net](mailto:info@chromsword.net)**